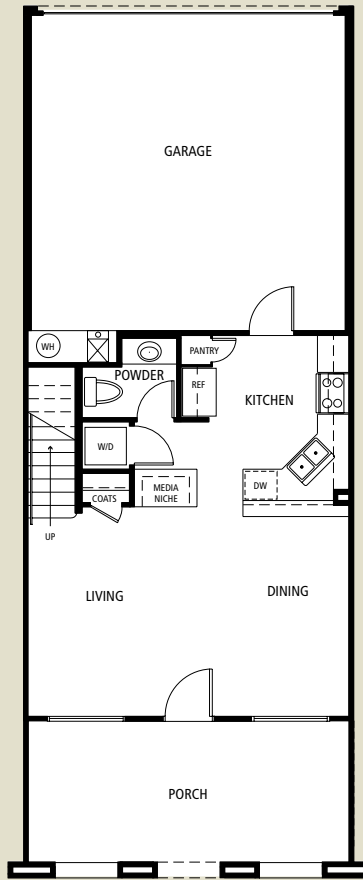


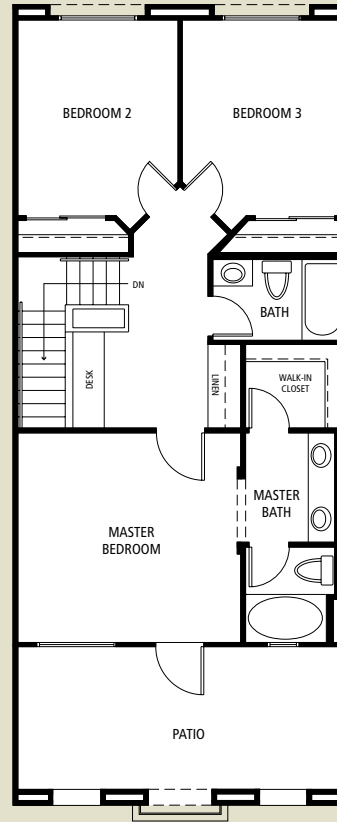


# Loma Vista Apartments

Residence 105A  
Approximately 1,240 Square Feet



FIRST FLOOR



SECOND FLOOR



# Loma Vista Apartments Features

- Beautifully crafted Spanish Colonial and Monterey architectural style with stucco finish to match the theme of the CSUCI campus.
- Dual Glazed vinyl windows for sound attenuation and optimum energy conservation.
- Concrete “S” tile roofing with gutters at select locations.
- Spacious interior living areas.
- Interior walls with bullnose corners in living areas.
- Prewired for cable television in all bedrooms and in family or living room area.
- Prewired for telephone and computer with category 5 wiring for high bandwidth applications in all bedrooms, kitchen, and family or living room area.
- Appliance package: GE 30” freestanding gas range and vent hood. GE Energy Star® dishwasher. GE 21.8 cu. ft. refrigerator with ice maker. GE extra large capacity front-loading washer & dryer.
- Cabinetry is prefinished red oak with sealed MDF interiors.
- Countertops throughout are laminate with rolled edge.
- Included flooring is carpet over pad, sheet vinyl in kitchen and other select locations.
- Central air conditioning and heating.
- 40 gal. hot water heater.
- Automatic fire sprinklers.

In the interest of continuous improvements, the Site Authority reserves the right for all units not under contract, to modify or change pricing, floor plans, materials, features, colors or availability of options without prior notice or obligation, from phase to phase. Product type is subject to availability. Optional features may be included at additional costs subject to construction cutoff dates. All square footages are approximate and may differ from actual measurement. All renderings, floor plans, color schemes and maps are artist conceptions and are not intended to be an actual depiction of the buildings, fencing, walks, driveways or landscaping. The Site Authority reserves the right to change or even not build future phases. Buyers should read carefully the Buyer Disclosure statement for all details of the Housing Program. The University Glen Corporation is supported by all residents in order to manage the aesthetic integrity of University Glen, maintain certain common areas and administer standards for the use and enjoyment of the University Glen residents. Payment of maintenance and management fees is required of all residents.

